

# Education Grand List

Percentage change

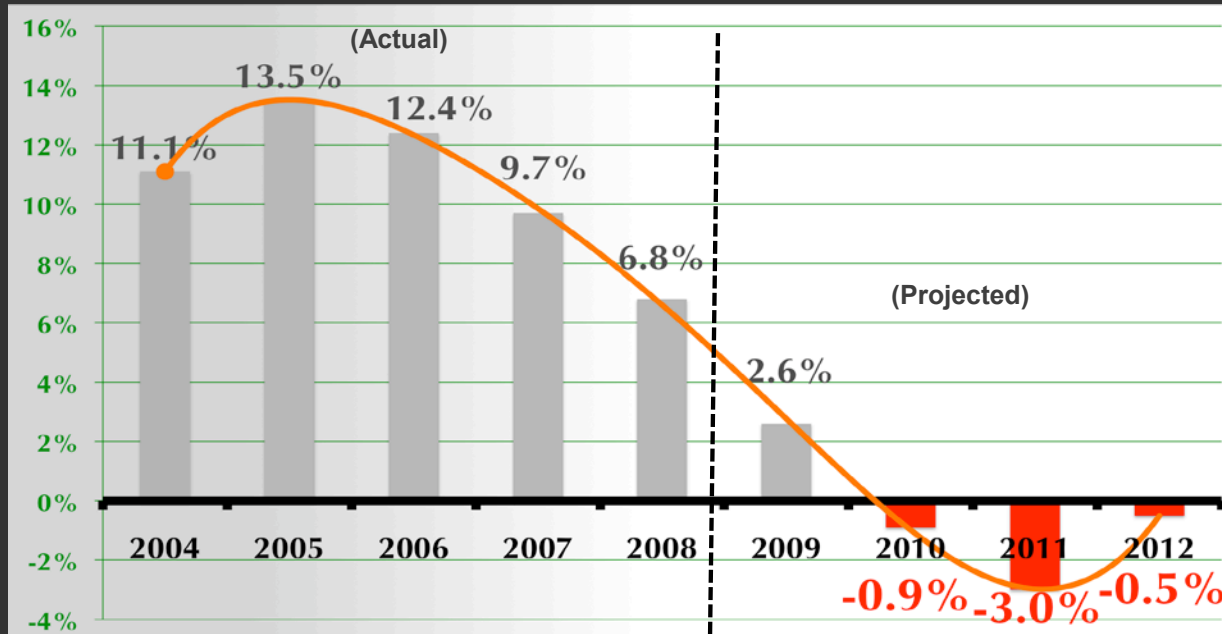
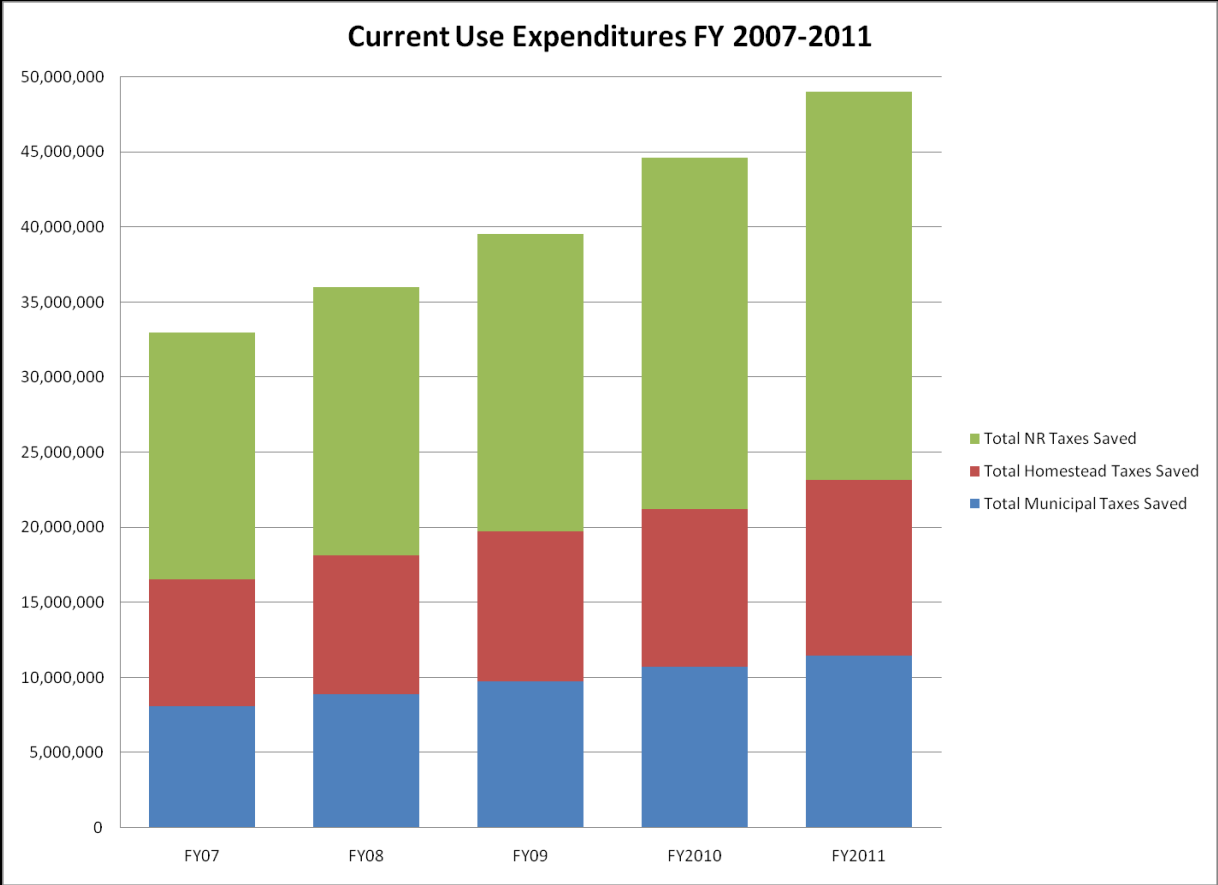


CHART A

# Growth in Current Use



**TOTAL NR TAXES SAVED**

**TOTAL HOMESTEAD TAXES SAVED**

**TOTAL MUNICIPAL TAXES SAVED**

CHART B

# GROWTH

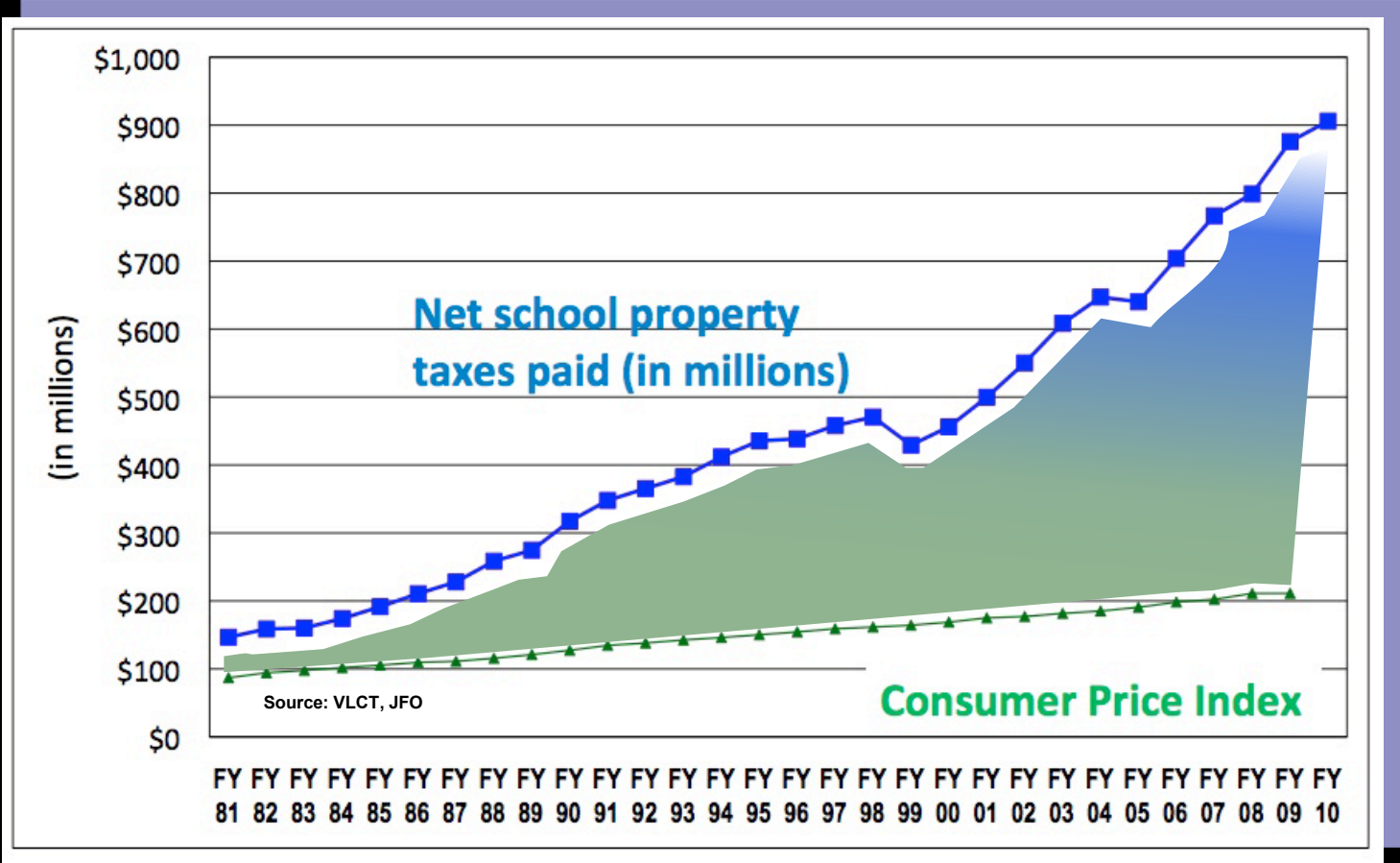


CHART C

**Vermont Public School Enrollments Will Not Reach 2009 Levels for at Least 12 Years**

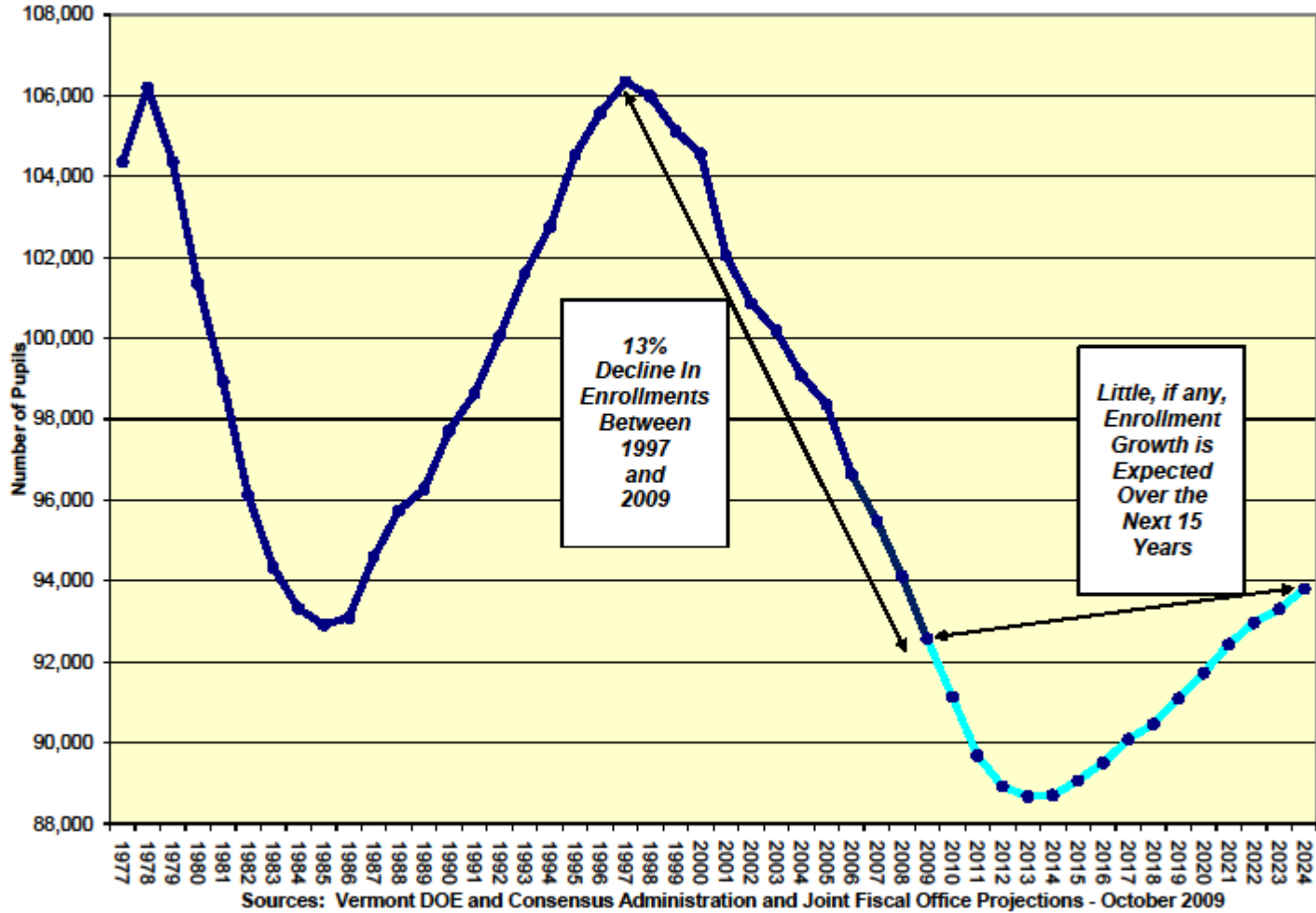


CHART D

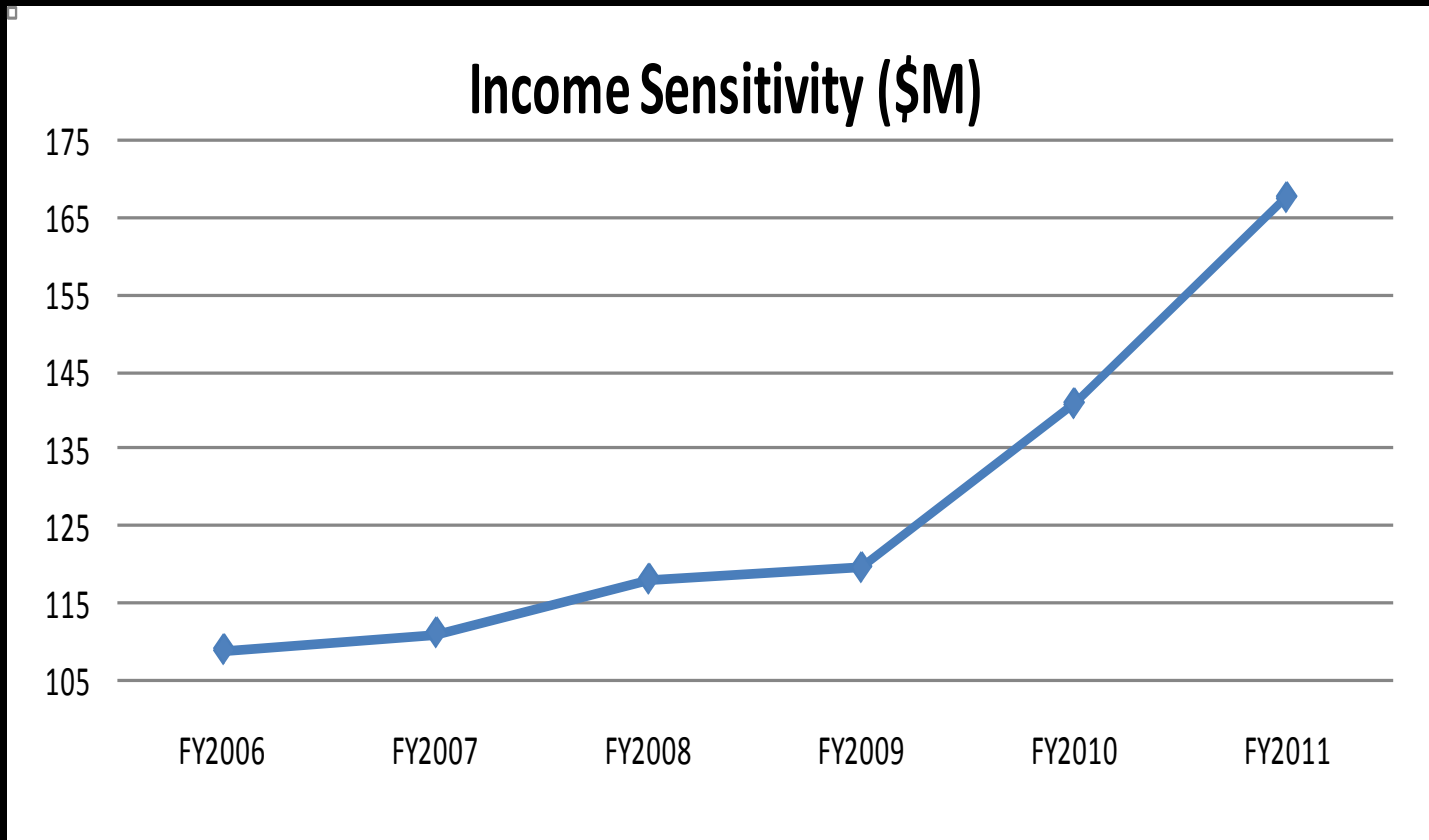


CHART E